



Riversgold Ltd

Exploring for large gold deposits in WA and Alaska...

AMEC Convention – June 2018

ASX:RGL

Disclaimer/Forward Looking Statements

This presentation contains certain statements which constitute “forward-looking statements”.

These statements include, without limitation, estimates of future capital expenditure; statements regarding the expectation or description of the prospectivity of the Riversgold Limited tenements; future exploration and exploration potential.

Where Riversgold Limited expresses or implies an expectation or belief as to future events or results, such expectation or belief is expressed in good faith and on a reasonable basis. No representation or warranty, express or implied, is made by Riversgold Limited that the matters stated in this presentation will in fact be achieved or prove to be correct.

Forward-looking statements are only predictions and are subject to risks, uncertainties and other factors, which could cause actual results to differ materially from future results expressed, projected or implied by such forward-looking statements.

Such risks and factors include, but are not limited to: emergence of previously underestimated technical challenges; environmental or social factors

Except for statutory liability which cannot be excluded, Riversgold Limited, its officers, employees and advisers expressly disclaim any responsibility for the accuracy or completeness of the material contained in this presentation and exclude all liability whatsoever (including in negligence) for any loss or damage which may be suffered by any person as a consequence of any information in this presentation or any error or omission therefrom.

Riversgold Limited does not undertake any obligation to release publicly any revisions to any forward-looking statement to reflect events or circumstances after the date of this presentation, or to reflect the occurrence of unanticipated events, except as they may be required under applicable securities laws.

A person should not make any investment decision in relation to Riversgold Limited based solely on the information in this presentation. This presentation does not necessarily contain all information which may be relevant or material to the making of an investment decision.

The securities issued are considered highly speculative in nature.

Any investor should make their own independent assessment of the risks of an investment, and with regard to their own particular requirements and financial circumstances, prior to making any decision to invest in Riversgold Limited.

Competent Person Statement

The information in this document that relates to Exploration Results is based on information compiled by Mr Allan Kelly, a Competent Person who is a Member of The Australian Institute of Geoscientists. Mr Kelly is the Managing Director and CEO of Riversgold Ltd. He is a full time employee of Riversgold Ltd and holds shares and options in the Company.

Mr Kelly has sufficient experience which is relevant to the style of mineralisation and type of deposit under consideration and to the activity which he is undertaking to qualify as a Competent Person as defined in the 2012 Edition of the ‘Australasian Code for Reporting of Exploration Results, Mineral Resources and Ore Reserves’. Mr Kelly consents to the inclusion in the presentation of the matters based on his information in the form and context in which it appears.

Information on historical results for the Alaskan and Kurnalpi regional projects, including Table 1 information, is contained in the Independent Geologists Report in the Riversgold Replacement Prospectus dated 11 August 2017.

Information on historical results for the Gemuk Mountain Project, including Table 1 information, is contained in the ASX Release dated 1 February 2018.

Information on the Cutler Project, including Table 1 information, is contained in the ASX Release dated 26 February 2018 and 8 June 2018

The Company confirms that it is not aware of any new information or data that materially affects the information in the original market announcements, and that the form and context in which the Competent Persons findings are presented have not been materially modified from the original market announcements.

Riversgold – Investment Highlights

- Riversgold has a portfolio of highly prospective exploration projects in **Australia, Alaska and Cambodia** and a Board with track record of successful exploration, discovery, development and production
- **Recent RC drilling has returned high-grade gold results from Cutler, in WA** – numerous other drill targets remain to be tested in the Kurnalpi region
- **Riversgold is exploring for a multi-million ounce Intrusion-Related Gold (IRG) deposit** in the **Tintina Gold Belt** of southwest Alaska, USA and has identified several large targets to be drill tested in 2018
- Riversgold plans to **drill test** beneath outcropping **high-grade gold** mineralisation at:
 - **Luna – rock chips up to 64.7g/t Au**
 - **Quicksilver – rock chips up to 37.5g/t Au**
 - **Kisa (Golden Dyke) - 4km long dyke swarm with rock chips up to 8g/t Au**
- **The first Alaskan field program will commence in early July 2018**

Corporate Snapshot

ASX Symbol	RGL
Shares on Issue	83.7M
Market Cap. (@ \$0.10)	\$8.4M
Cash (Mar 18 Qtr)	\$3.9M
Options (\$0.20)	22.2M

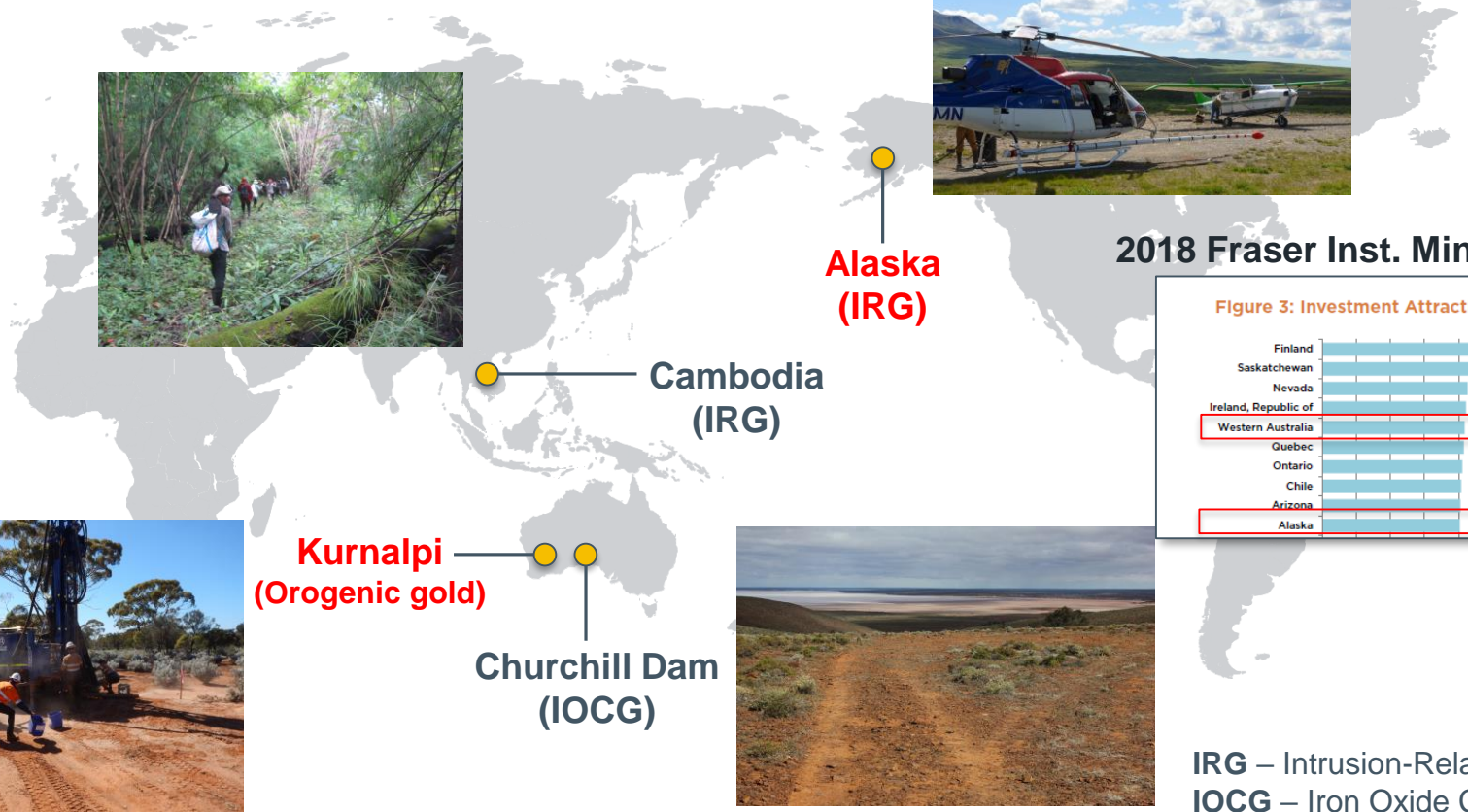
Major Shareholders	%
Greenwich Equities	17.0
Evolution Mining Ltd	15.1
Board/Management	10.1
Top 20 Shareholders	64.3

Experienced Board with track record of discovery, development and production

Rod Webster Non-Exec Chairman	<ul style="list-style-type: none"> • Mining Engineer with >40 years experience • Formerly Western Metals, First Quantum, Weatherly
Allan Kelly Managing Director	<ul style="list-style-type: none"> • Geologist with >25 years experience • Founding MD, Doray Minerals Ltd (2009-2016) • Most successful IPO of 2010, “Explorer of the Year”, 2011 • AMEC “Prospector Award”, 2014, for Andy Well discovery • Funded and built 2 new gold mines in 4 years
Jeff Foster Non-Exec Director	<ul style="list-style-type: none"> • Geologist with >30 years experience • Founder and former Exec Director, Sirius Resources

Project Portfolio

Highly prospective gold projects with potential for year-round news flow



**Alaska
(IRG)**

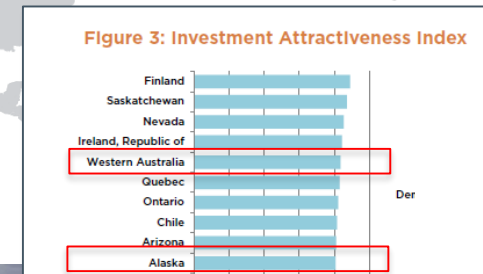
**Cambodia
(IRG)**

**Kurnalpi
(Orogenic gold)**

**Churchill Dam
(IOCG)**



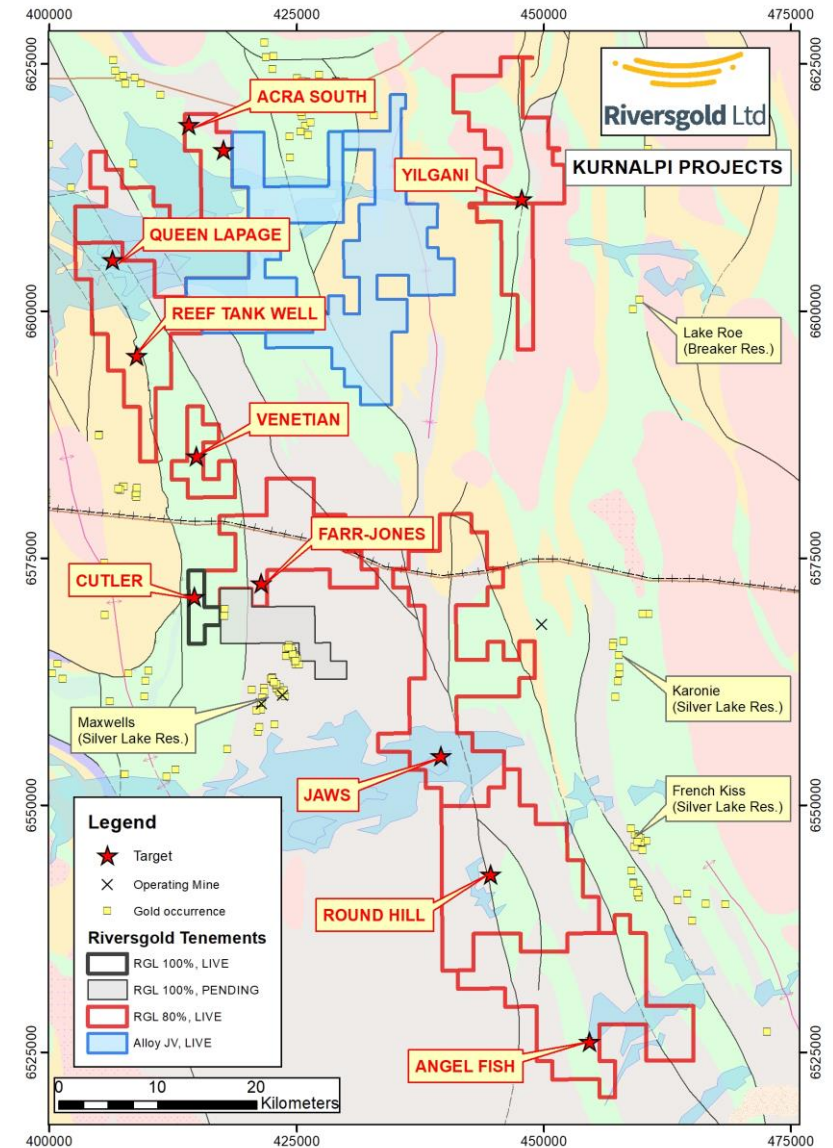
2018 Fraser Inst. Mining Survey



IRG – Intrusion-Related Gold
IOCG – Iron Oxide Cu-Au

Kurnalpi Projects, WA

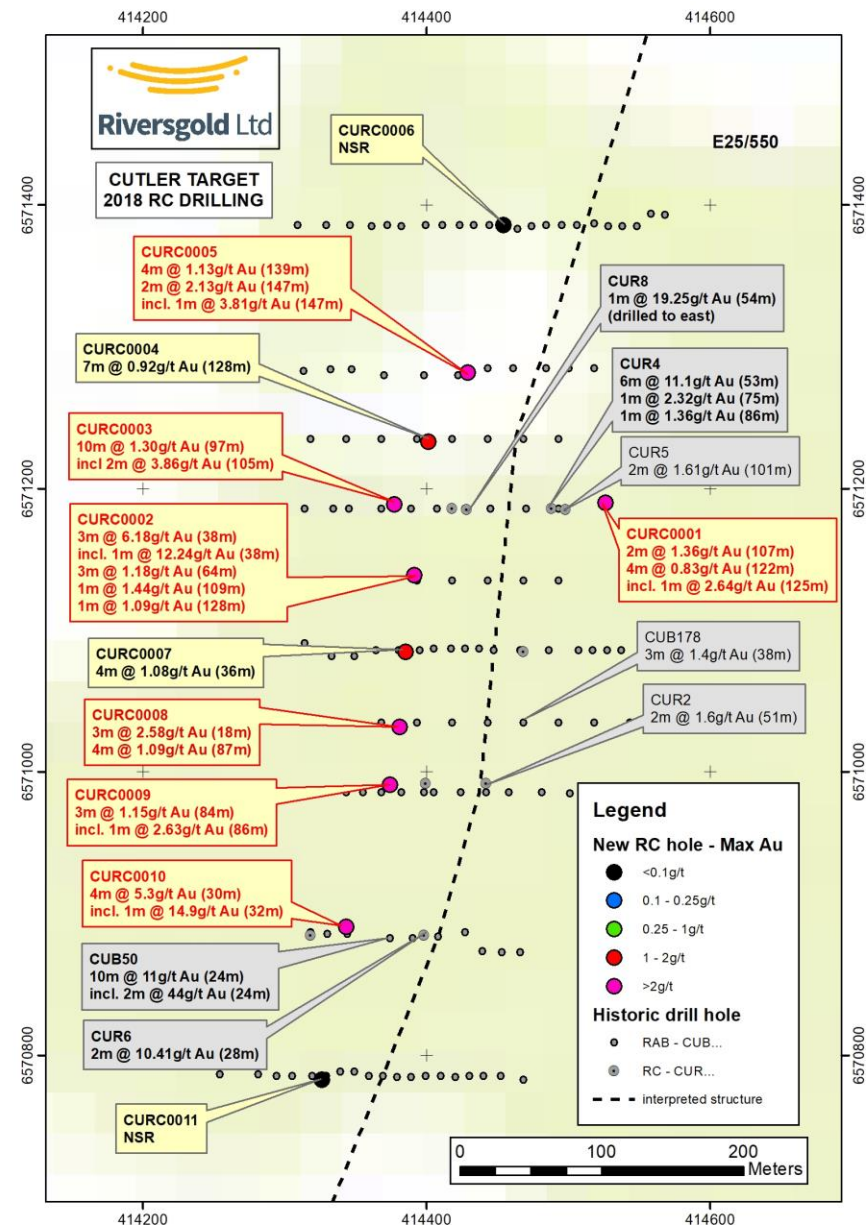
- Large land position 100km E of Kalgoorlie
- Proximity to existing transport and processing infrastructure (e.g. Silver Lake and Saracen)
- **Gold exploration hot spot:**
 - Breaker – Lake Roe
 - Apollo - Bombora
 - Kairos – Roe Hills
- Drill targets along mineralised trends
 - Numerous geochemical gold anomalies
 - Limited drilling >100m deep
- **Cutler drilling hits 500m long structure with high-grade gold results**
- **2.6km long gold target defined at Yilgani**



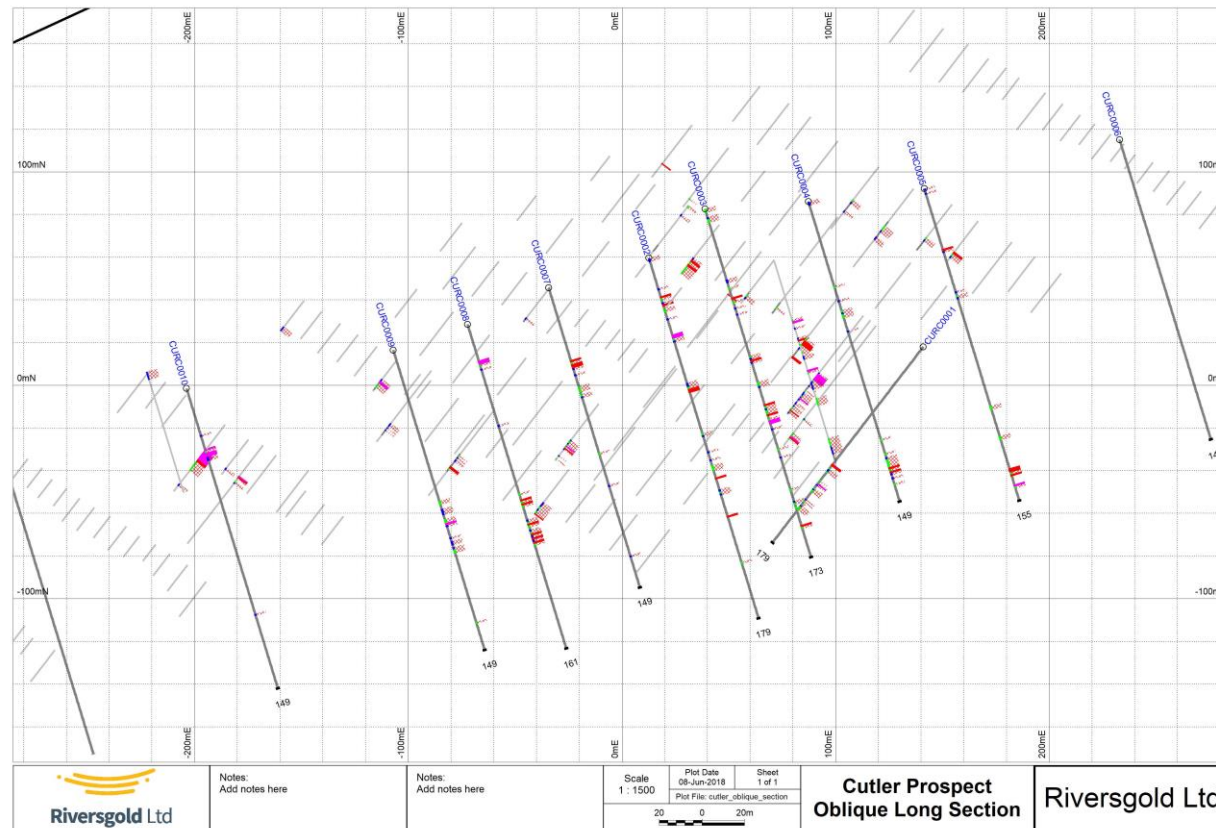
Cutler

- Purchased 100% of E25/550 in Feb 2018*
- Coherent 600m long zone of supergene gold in historic RAB drilling
- West dipping structure previously only tested with RC drilling on one section
- No drilling since 1995
- **Recent RC drilling - high grade oxide gold and mineralised structure over 500m*:**
 - **CURC0002 – 3m @ 6.18g/t Au**
 - CURC0003 – 10m @ 1.30g/t Au
 - **CURC0010 – 4m @ 5.31g/t Au**
- **Potential 2km strike length and second parallel structure**

*See ASX Releases dated 26 Feb 2018, 8 June 2018



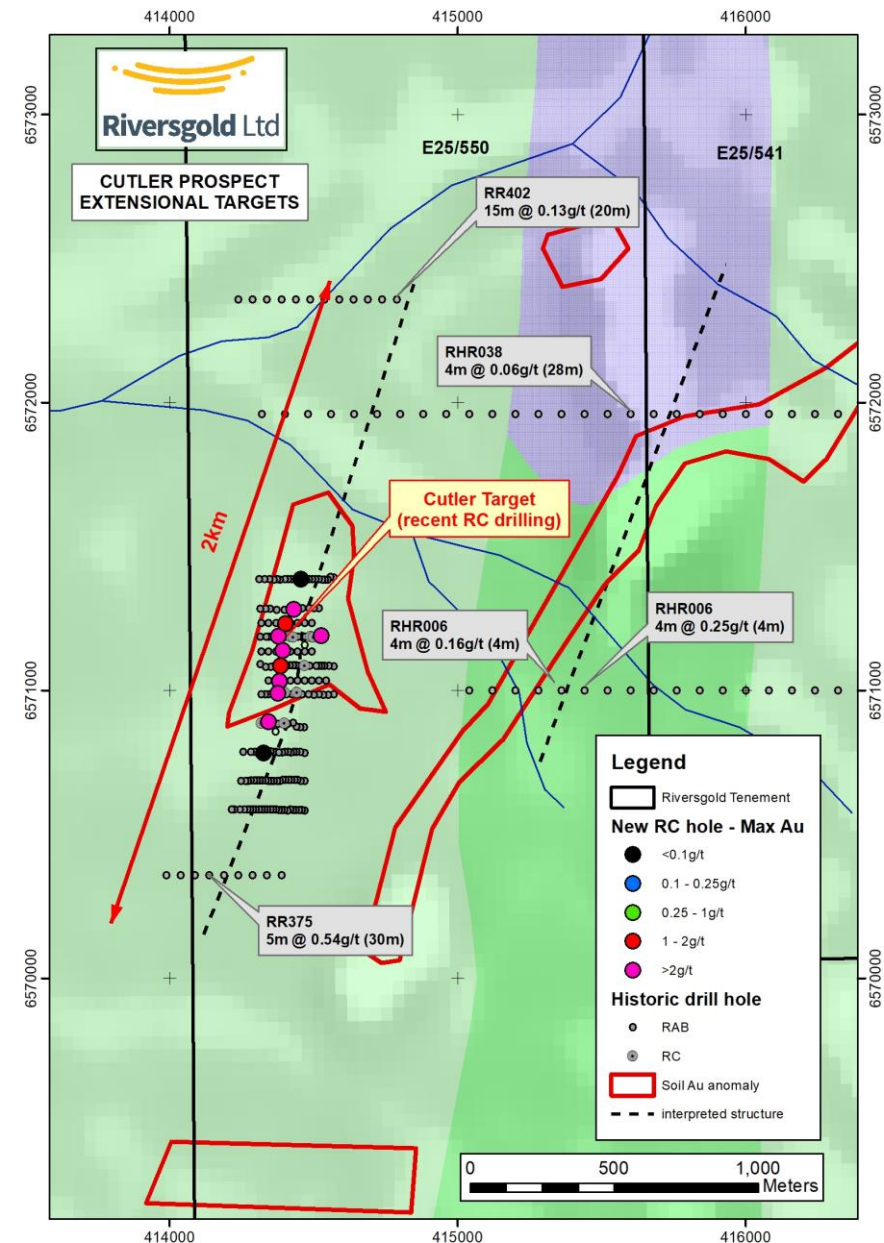
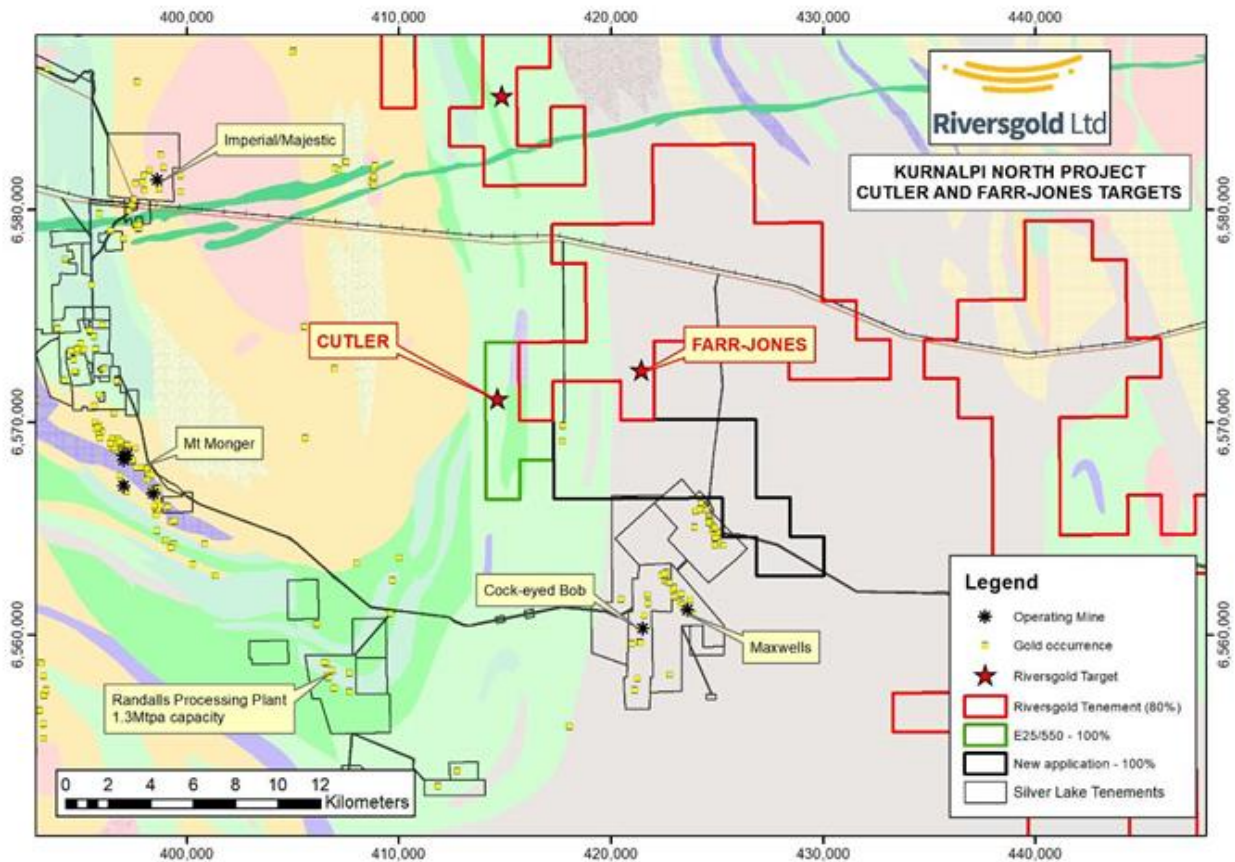
Cutler RC drilling



*Oblique Long Section looking towards NW
Red >1g/t Au, Magenta >2g/t Au.*

- 11 RC holes drilled
 - 1 hole per section
 - 50-100m line spacing
- Shallow oxide intersections:
 - **3m @ 6.18g/t Au**
 - 3m @ 2.58g/t Au
 - **4m @ 5.31g/t Au**
- 500m long structure:
 - **1-4g/t intersections**
 - Steep W-dipping
 - Shallow N-plunge(?)
 - Open at depth
- **Infill and extensional drilling planned**

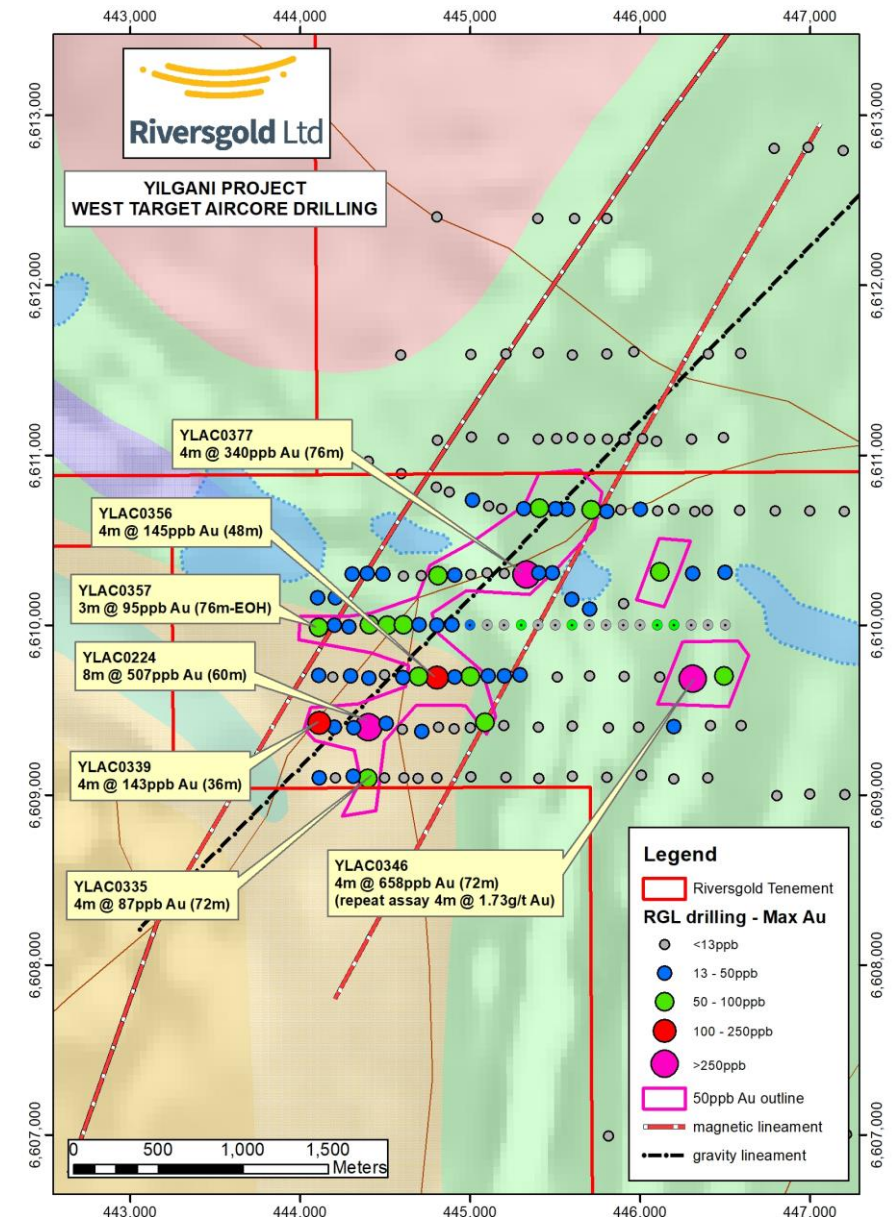
Cutler – substantial upside



Yilgani – West Target

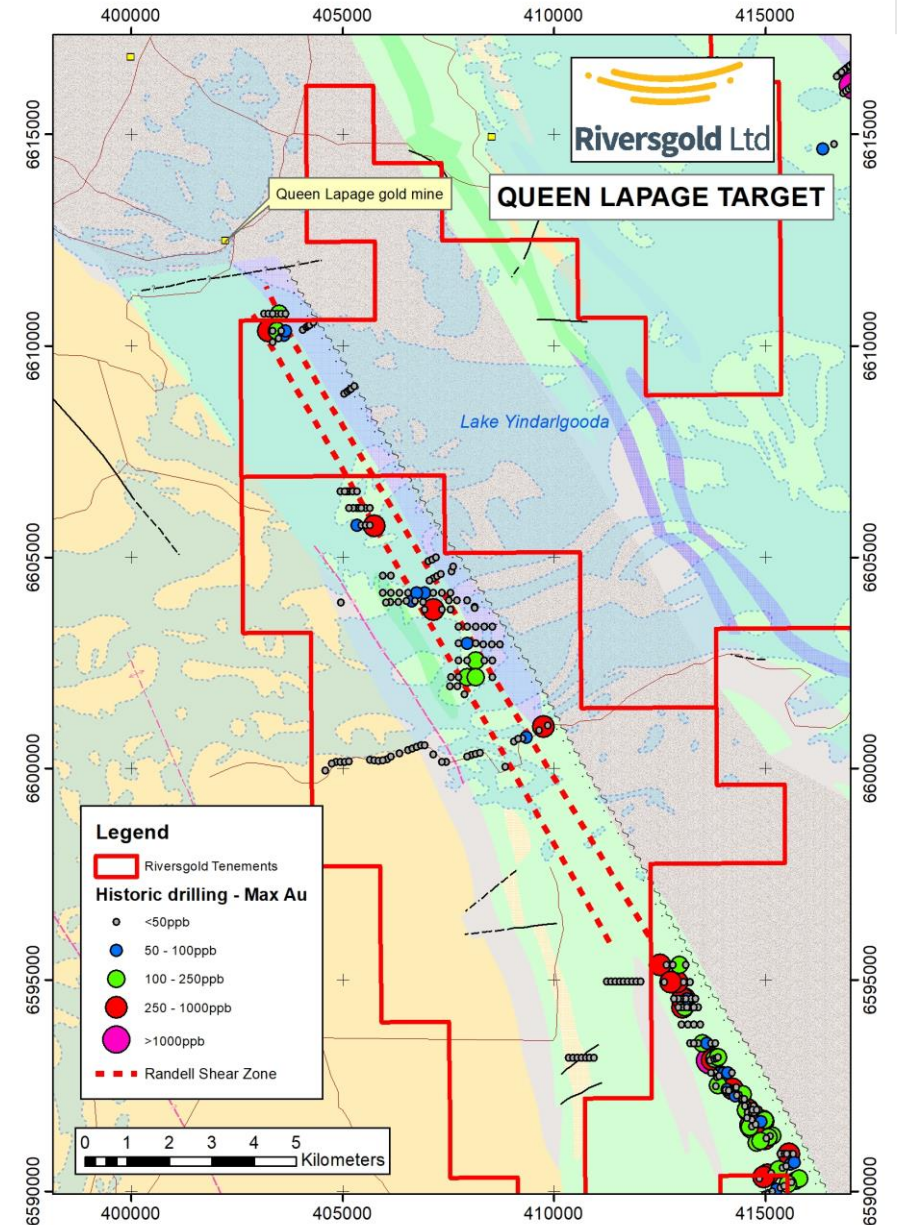
- Bedrock gold target associated with NE-trending structure – confirmed by recent gravity survey
- Geology/structure analogous to Carosue Dam and Pinnacles gold deposits - dilational jog next to internal granite
- 2.6km long zone of anomalous gold and pathfinder elements in aircore drilling:
 - 8m @ 507ppb Au (YLAC0224)
 - 4m @ 145ppb Au (YLAC0356)
 - 4m @ 340ppb Au (YLAC0377)
- Infill gravity completed – infill drilling planned

*See ASX Releases dated 7 February 2018, 28 March 2018 and 26 April 2018



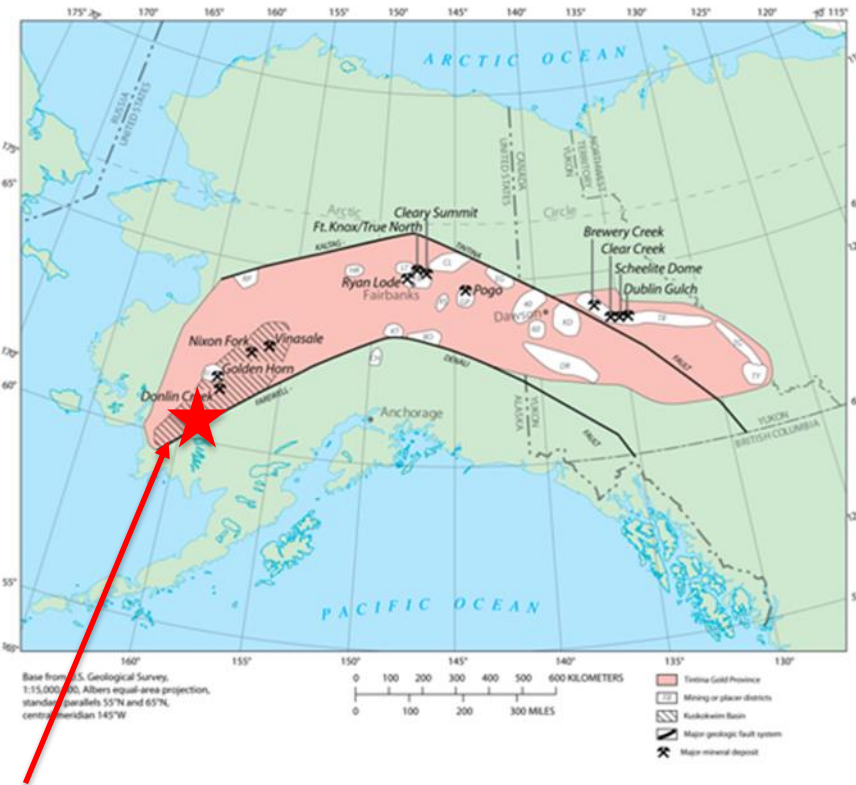
Queen Lapage Target

- 15km segment of mineralised “Randell Shear Zone” – mostly under shallow salt lake cover
- Along strike from Queen Lapage open pit gold mine
- Anomalous gold in historical drilling – open at depth and along strike
- Numerous NE-trending faults - felsic/sedimentary rocks untested
- **Lake drilling planned following heritage approvals**



Alaskan Intrusion-Related Gold (IRG)

Tintina Gold Province
(the “birthplace” of Intrusion-Related Gold)



Riversgold project area

Deposit	Location	Resource (Moz)	Grade (g/t)
Donlin Creek	Alaska	45	2.5
Pogo	Alaska	8	12
Fort Knox	Alaska	3.9	0.5
Livengood	Alaska	12.5	0.7
Nixon Fork	Alaska	0.19	17.0
Shotgun	Alaska	0.7	1.0
Okvau	Cambodia	1.13	2.0

Source: Company announcements

The Alaskan Opportunity



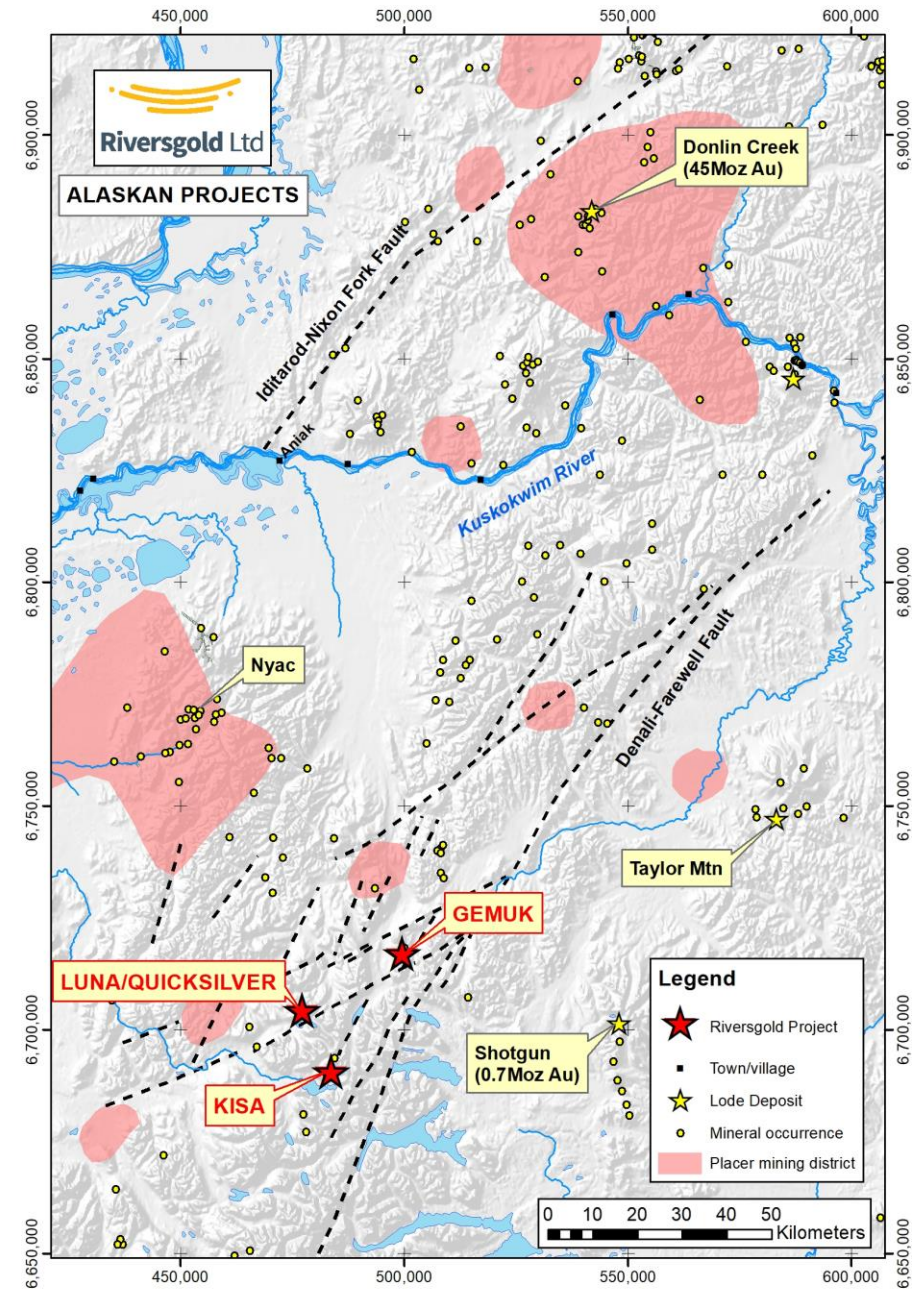
Riversgold project area

- **World-class gold endowment*:**
 - 2.5% of world's reserves
 - 40% of USA's resources
 - 2nd largest producer in USA
- Established mining industry
 - 6 producing mines
 - 8 major projects underway
- Stable Federal/State governments
- Clearly defined land status and permitting processes
- Supportive Native Corporations
- **Top 10 in annual Fraser Institute Global Mining Survey**

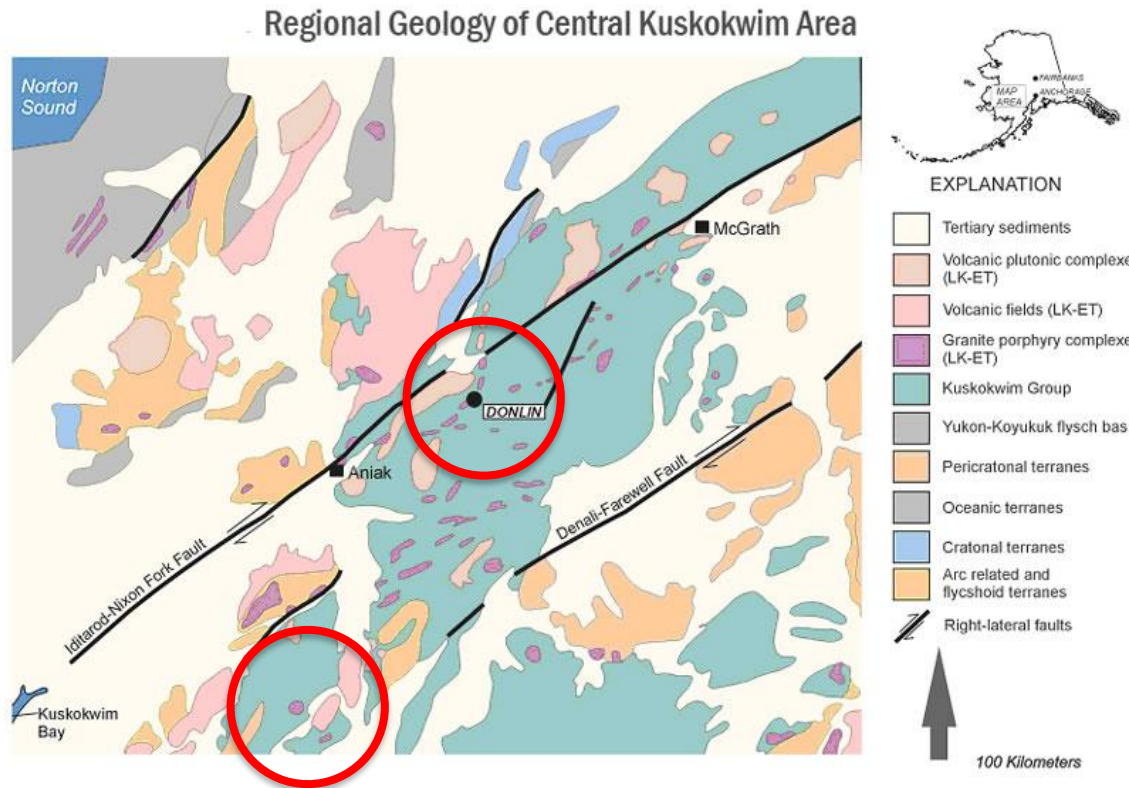
**(USGS 2016 world estimates; DGGs Alaska 2016 data)*

Riversgold Alaskan Projects

- **100% owned State of Alaska mining claims over 3 IRG targets in Kuskokwim Mineral Belt:**
 - Luna/Quicksilver
 - Kisa
 - Gemuk Mountain
- **150km south of giant Donlin Creek gold deposit (45Moz Au)**
- **Strategic land position on North Fork Fault**
 - 2nd order splay off Denali-Farewell Fault
 - Intruded by late Cretaceous granites
 - Historic placer gold mining area
- **Proprietary regional geochemistry and geophysics datasets**



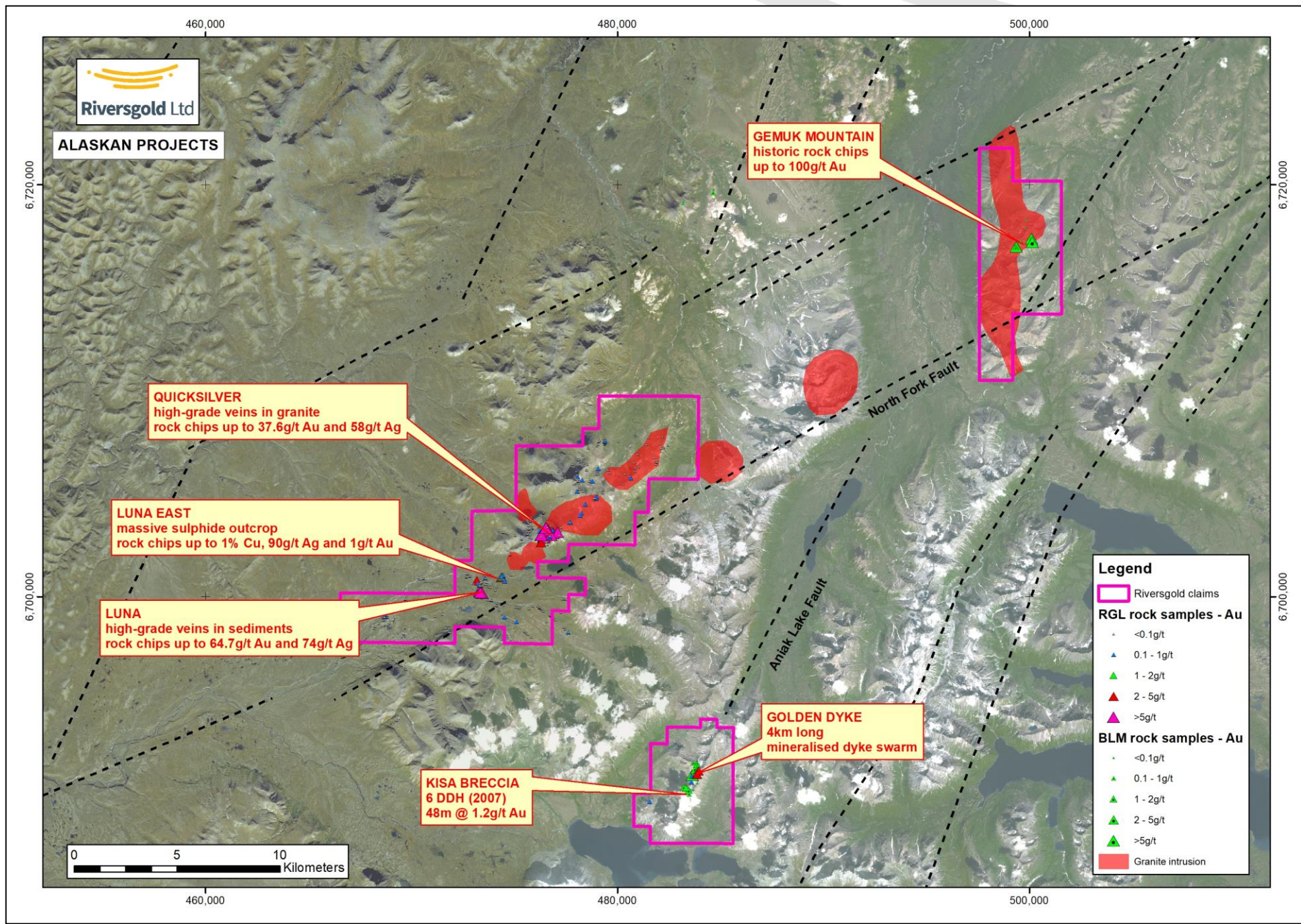
Regional Geology/History



Riversgold Projects

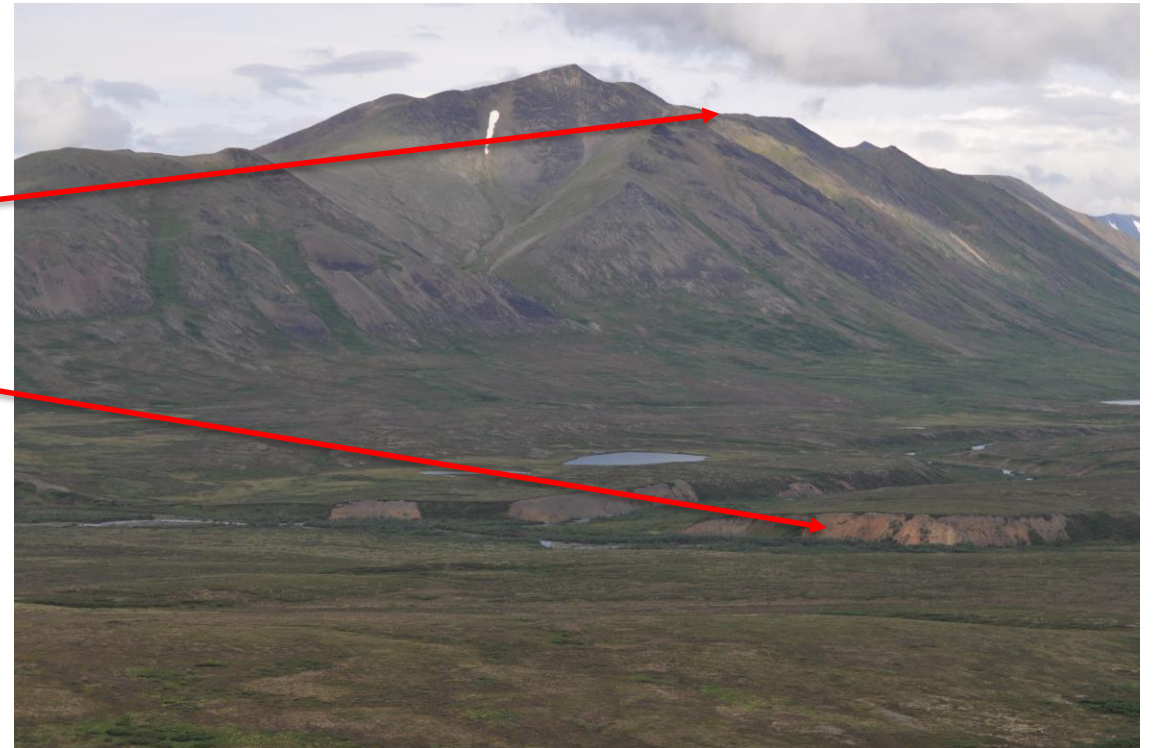
- Deposition of shale and sandstones of Kuskokwim Group (95-76Ma)
- Regional volcanism/magmatism (~70Ma)
 - Volcanic-plutonic complexes (granites)
 - Structurally controlled felsic dikes/sills
- Dextral strike-slip motion with ~70Ma Au event
- **Denali-Farewell Fault ~135km dextral offset**
 - **places Luna/Quicksilver and Gemuk close to Donlin at ~70Ma Au event**
- Faults focused the fluids and Au mineralisation
- Intrusion-Related Gold deposits are located:
 - along the major faults (eg Nixon Fork)
 - between the faults (e.g. Donlin)

Source: "Late Cretaceous Tectonic Evolution and Metallogeny of Southwestern Alaska", USGS



Luna/Quicksilver

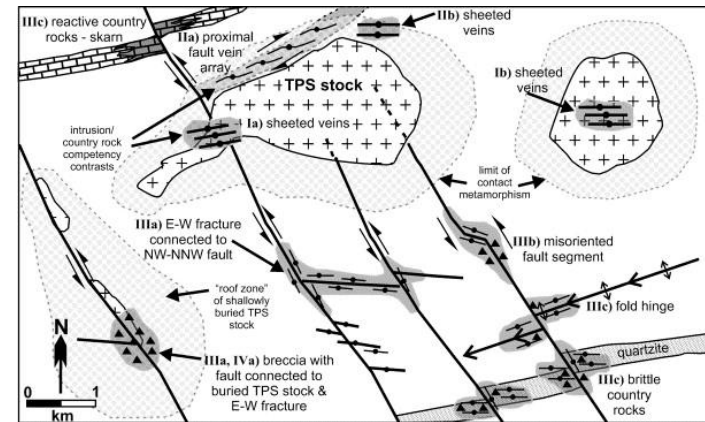
- 20km long mineralised structure – 50% covered by shallow till/alluvium
- Similar scale to Donlin Creek (45Moz)
- **Outcropping high-grade gold 5km apart:**
 - Quicksilver (**37.5g/t Au**)
 - Luna (**64.7g/t Au**)
- **Massive sulphide mineralisation:**
 - Luna East (**1.2% Cu**)
- Detailed helimag survey flown mid-2017
- Potential for Au-Cu skarns in pressure shadows next to North Fork Pluton
- **Plan to drill test multiple targets in 2018**



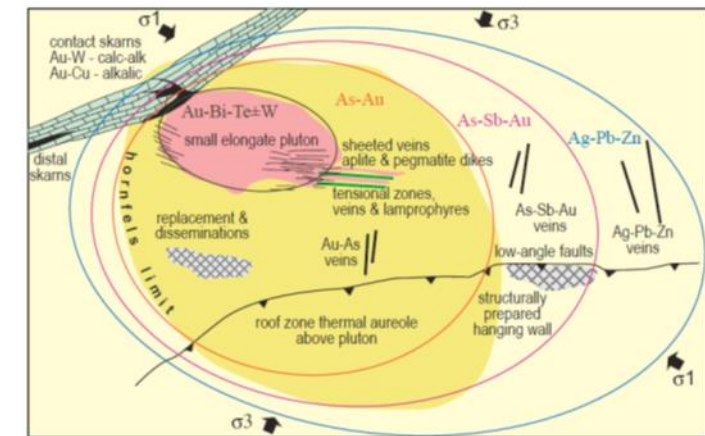
Looking NE towards Luna (foreground) and Quicksilver (background)

Key ingredients for a large IRG deposit:

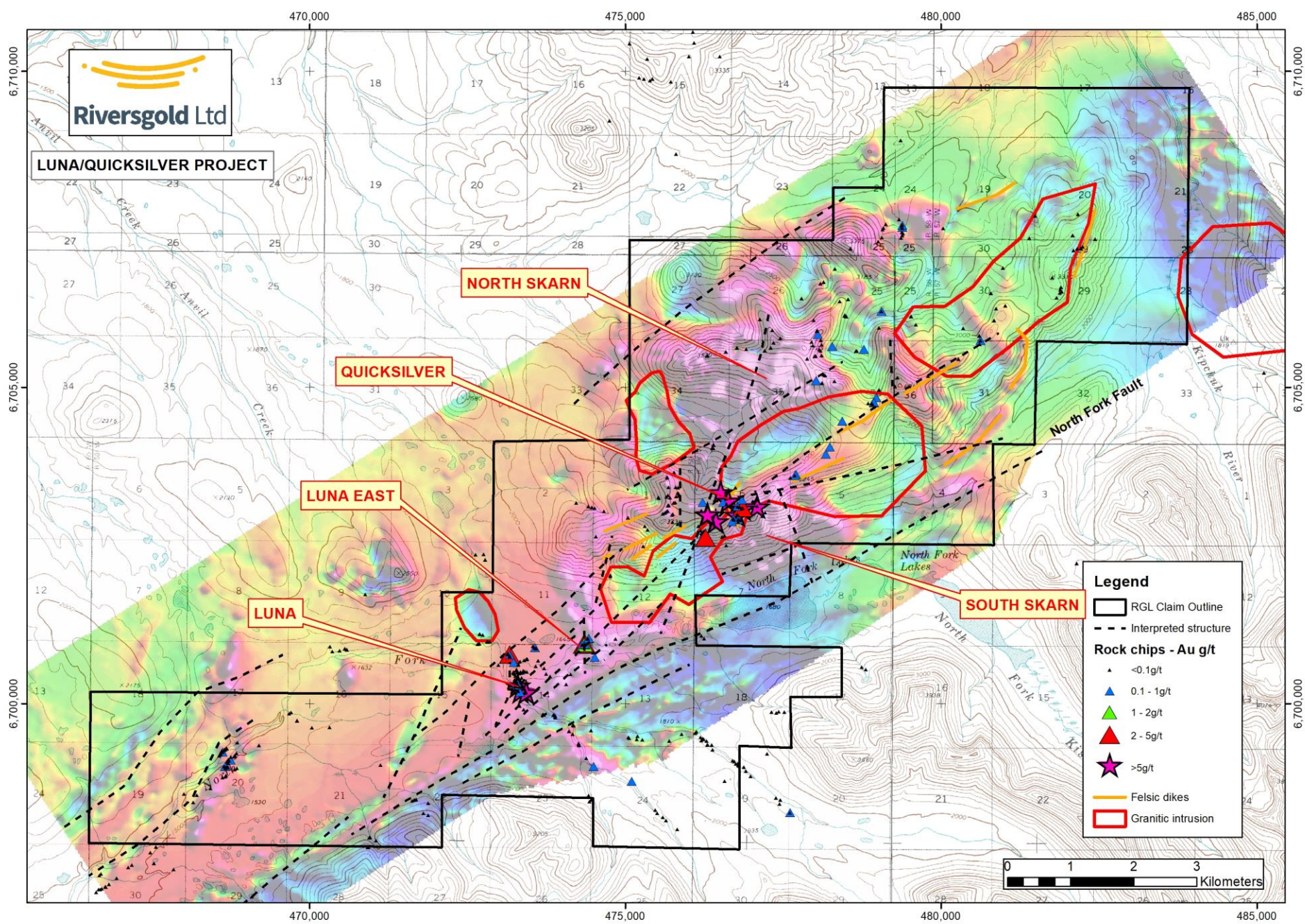
IRG Ingredients	Luna /Quicksilver	Donlin Creek
Cretaceous Kuskokwim Group black shales	✓	✓
Late Cretaceous/Tertiary granite and hornfels	✓	at depth
Splay fault off Tintina bounding fault	✓	✓
Multiple felsic porphyry dikes/sills	✓	✓
Placer gold occurrence	✓	✓
Au-Ag-As-Bi-Hg-Sb soil anomalism	✓	✓
Qtz/sulphide veins with Au, Ag, As and Sb	✓	✓
Ore-grade copper sulphides	✓	-
Potential high-grade Au-Cu skarn	✓	-
World-class gold deposit	Never drilled	45Moz



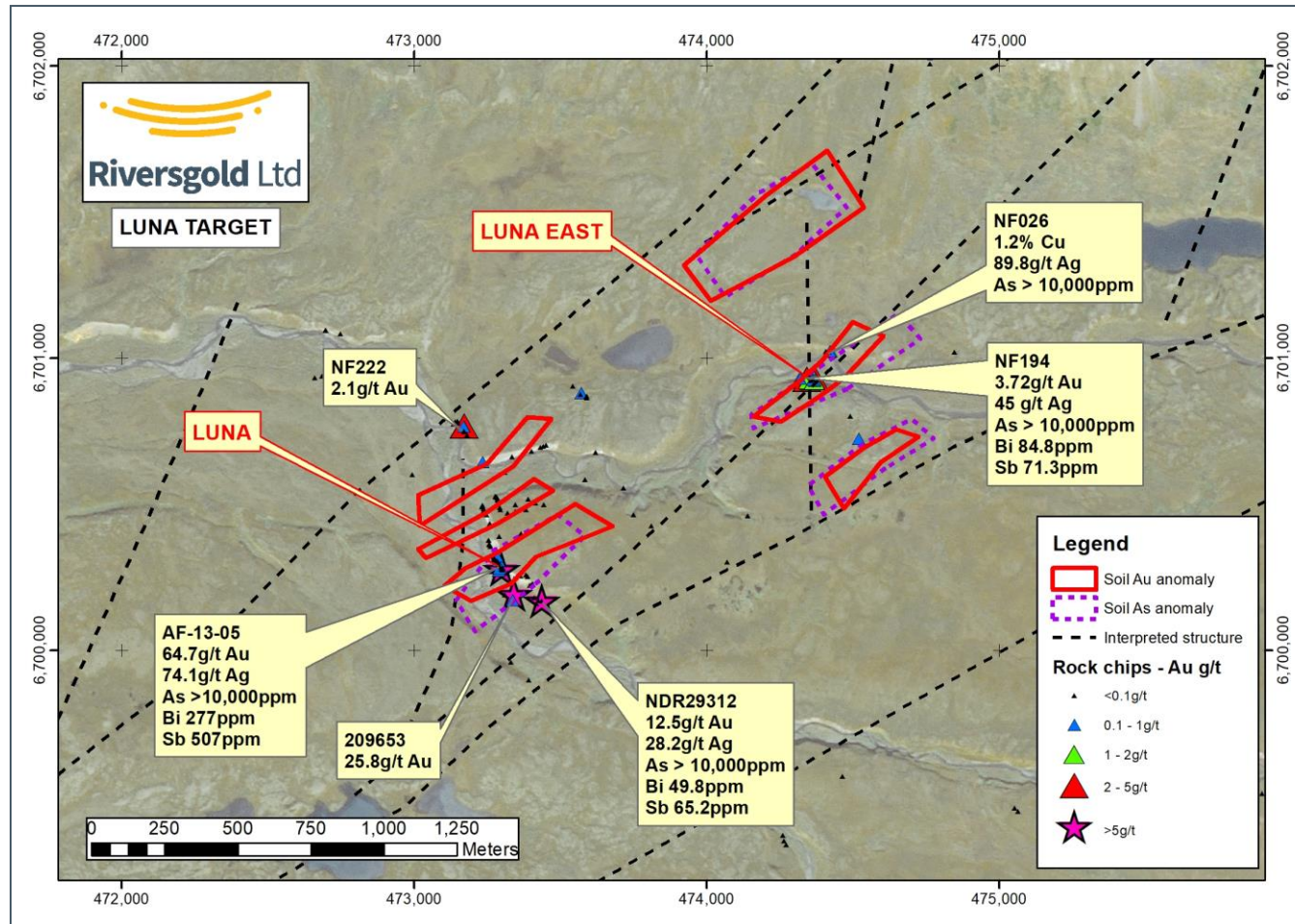
Generalised Intrusion-related gold settings (Stephens et al 2004)



Generalised Intrusion-related gold model (Hart et al 2002)

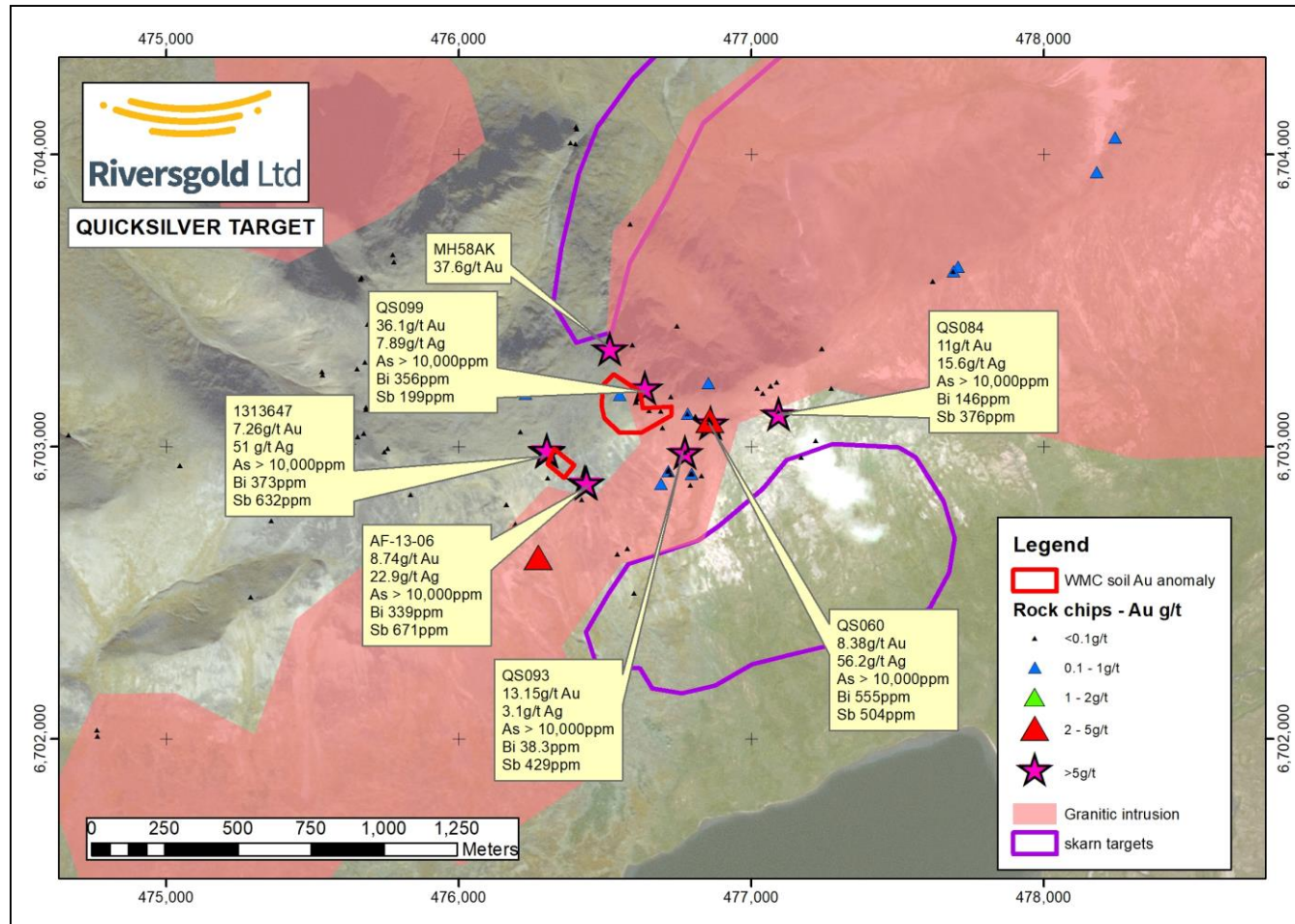


Luna-Luna East



High-grade Luna outcrop

Quicksilver

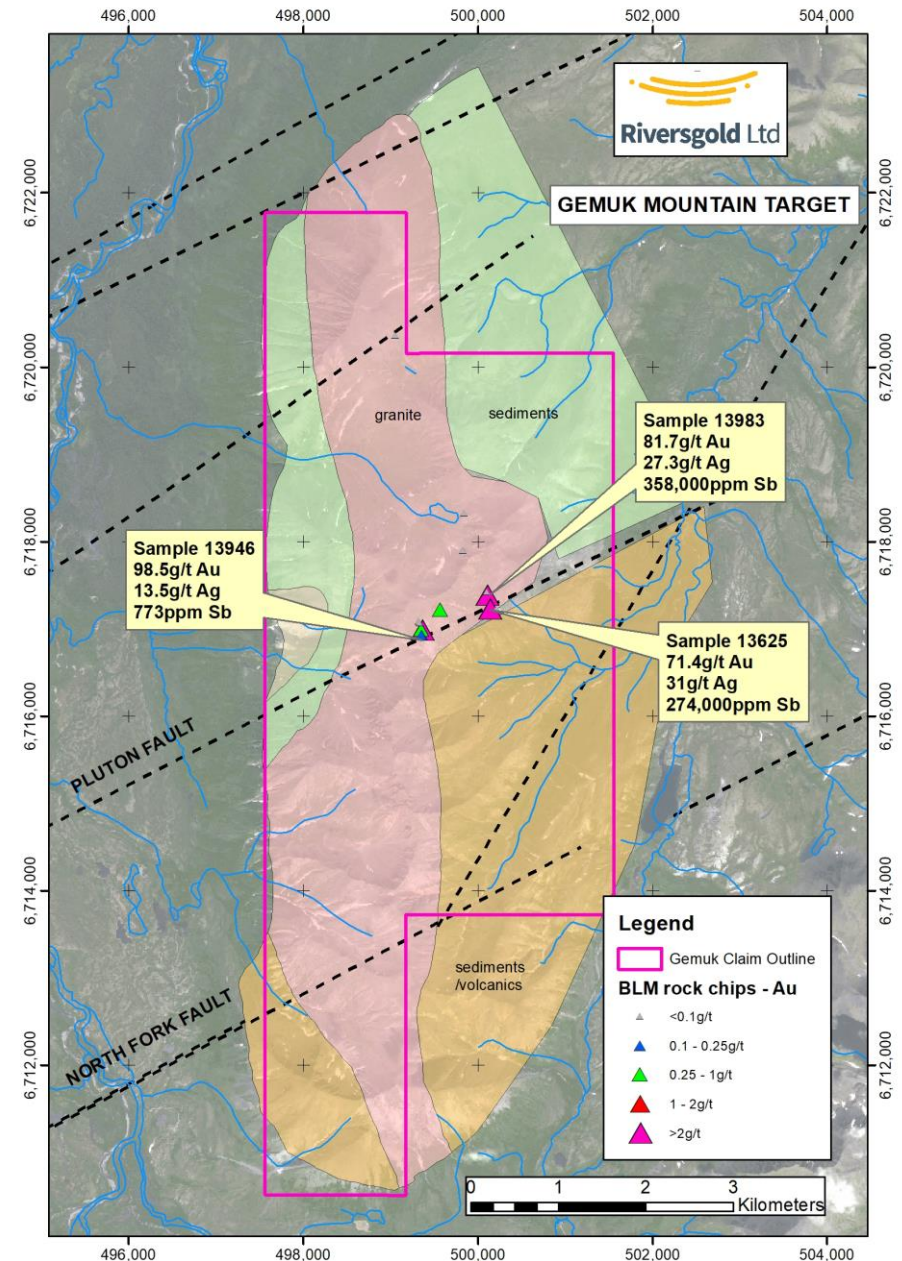


Granite and felsic dikes intruding sediments (hornfelsed shale, sandstone and limestone)

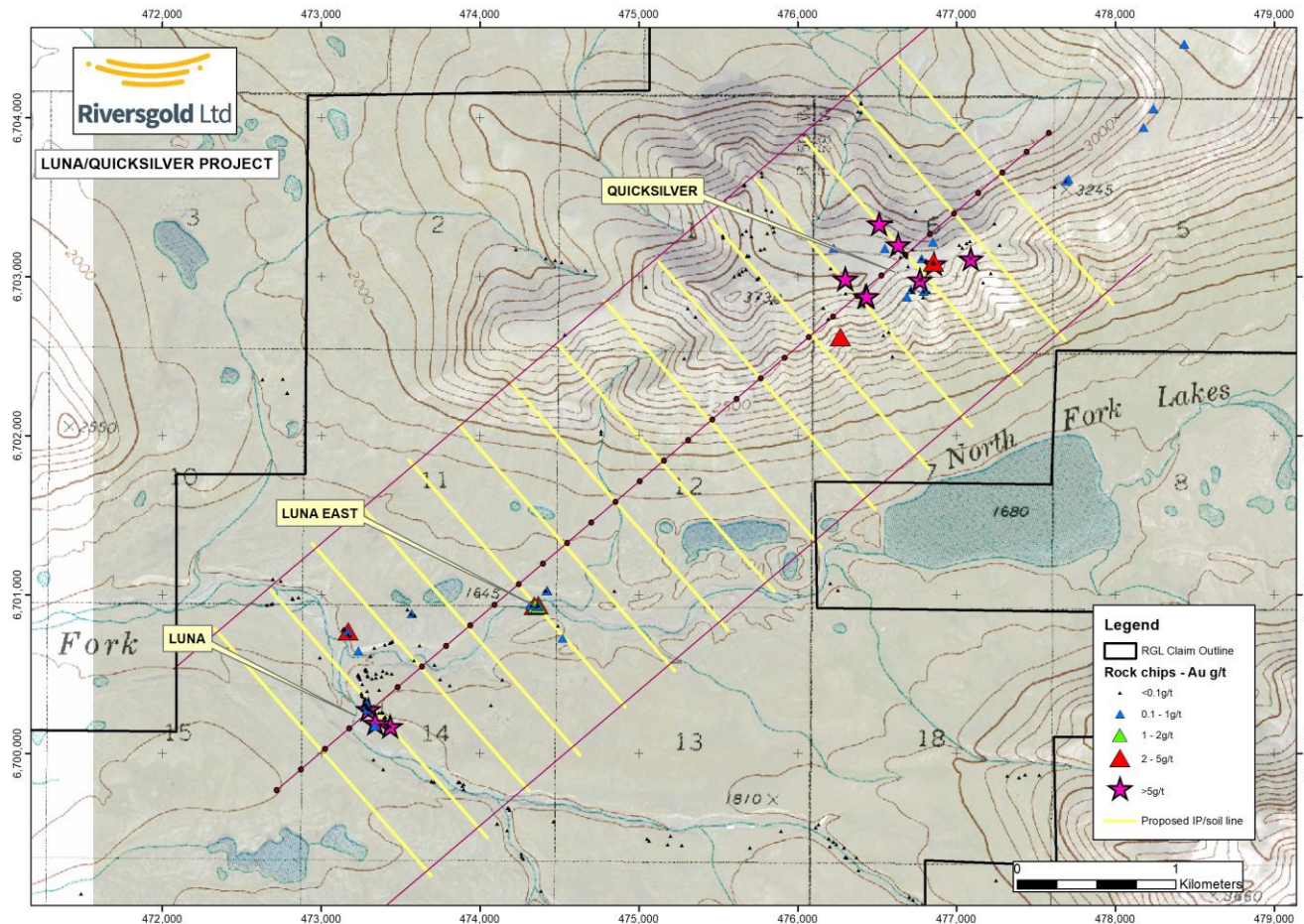
Gemuk Mountain

- New **100% owned** State of Alaska mining claims staked early 2018*
- High-grade rock chips from historic Government sampling
 - **up to 100g/t Au and high-grade Sb**
 - As, Ag
- Qtz-arsenopyrite-stibnite veins in granite
- Mineralised fault **along strike from Luna/Quicksilver** mineralisation
- Mapping and sampling planned for 2018

* See ASX Release dated 1 February 2018



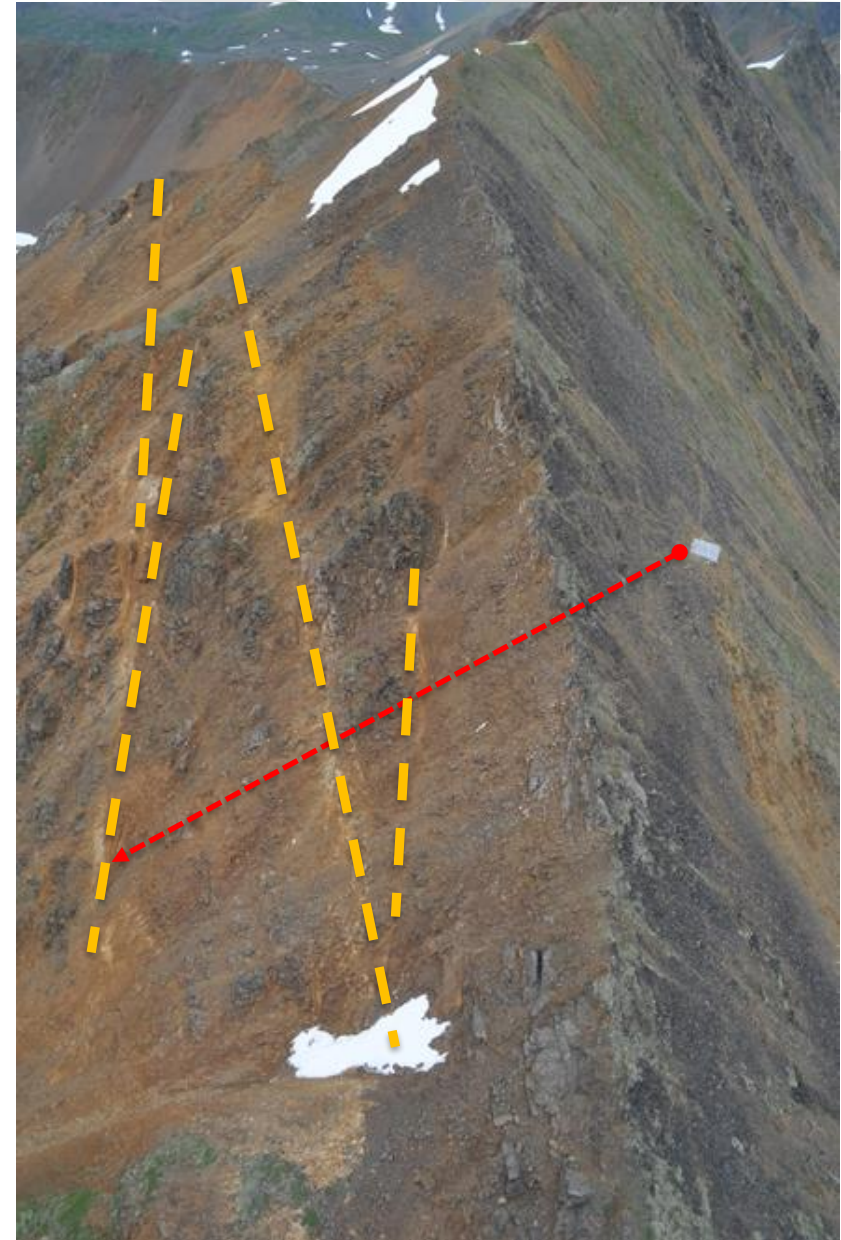
2018 Alaska Field Season Objectives



- **Luna/Quicksilver:**
 - IP survey
 - Grid soil sampling
 - Mapping using 2017 helimag data
- **Gemuk Mountain:**
 - Soil/rock chip sampling
- **Diamond Drilling:**
 - Luna/Luna East
 - Quicksilver
 - Skarn targets
 - Kisa - Golden Dyke

Kisa – Golden Dyke

- 4km long felsic dike swarm along N-S ridgeline
- Outcropping gold mineralisation:
 - **Rock chips 0.1 – 8g/t Au**
 - As-Bi-W-Mo anomalism
- Au in soil anomaly on back slope
- **1 DDH planned in 2018**
 - Drill platform in place from 2007



Indicative Fieldwork schedule

	Jul					Aug	
Week	2/7	9/7	16/7	23/7	30/7	6/8	13/8
Geophysics	■						
Geochem	■						
Drilling				■			



Riversgold - Summary

- **Highly prospective exploration projects in world-class gold terranes:**
 - Strategic portfolio in Eastern Goldfields with numerous targets
 - Two Intrusion-Related Gold terranes (Alaska and Cambodia)
- **Experienced Board** with track record of successful exploration, discovery, development and production
- A\$3.9M cash @ 30 March 2018
 - Strategic cornerstone investor – Evolution Mining Limited
- **Target testing accelerating over next 6 months**
 - **High-grade gold and 500m long structure at Cutler**
 - **2.6km long bedrock gold target identified at Yilgani**
 - **Numerous drill programmes planned for Kurnalpi targets**
 - **First ever drilling of Luna-Quicksilver in mid-2018**
 - **Churchill Dam IOCG target to be tested in H2 2018**



Luna East massive sulphide outcrop

Target testing and news flow accelerating through 2018...

Project	2018		
	Jun	Sep	Dec
Yilgani	GPX	aircore +/-RC	aircore +/-RC
Kurnalpi North	Cutler RC Farr-Jones RC	Venetian Queen Lapage	
Kurnalpi South	GPX	GC	aircore
Alaska		GC/GPX Luna/Quicksilver Kisa	
South Australia			Churchill Dam
News flow	✓	✓	✓

GC – geochem

GPX - geophysics

D – drill program (subject to approvals)



Riversgold Ltd

www.riversgold.com.au

