

## Wodgina East Site Trip Completed

### Highlights:

- Wodgina East tenement E45/6363 granted – expenditure obligations up to date
- Strategically abuts the eastern edge of Mineral Resources' (ASX: MIN) Wodgina Lithium Mine
- Wodgina Mine operations now very close to tenement boundary – Figure 2
- Channel iron deposits in tenement located only 114km from Utah Point shipping terminal at Port Hedland
- Historical rock chip sampling from Mesa 2 returned 8 samples ranging from 51.94% - 56.67% Fe<sup>1</sup>

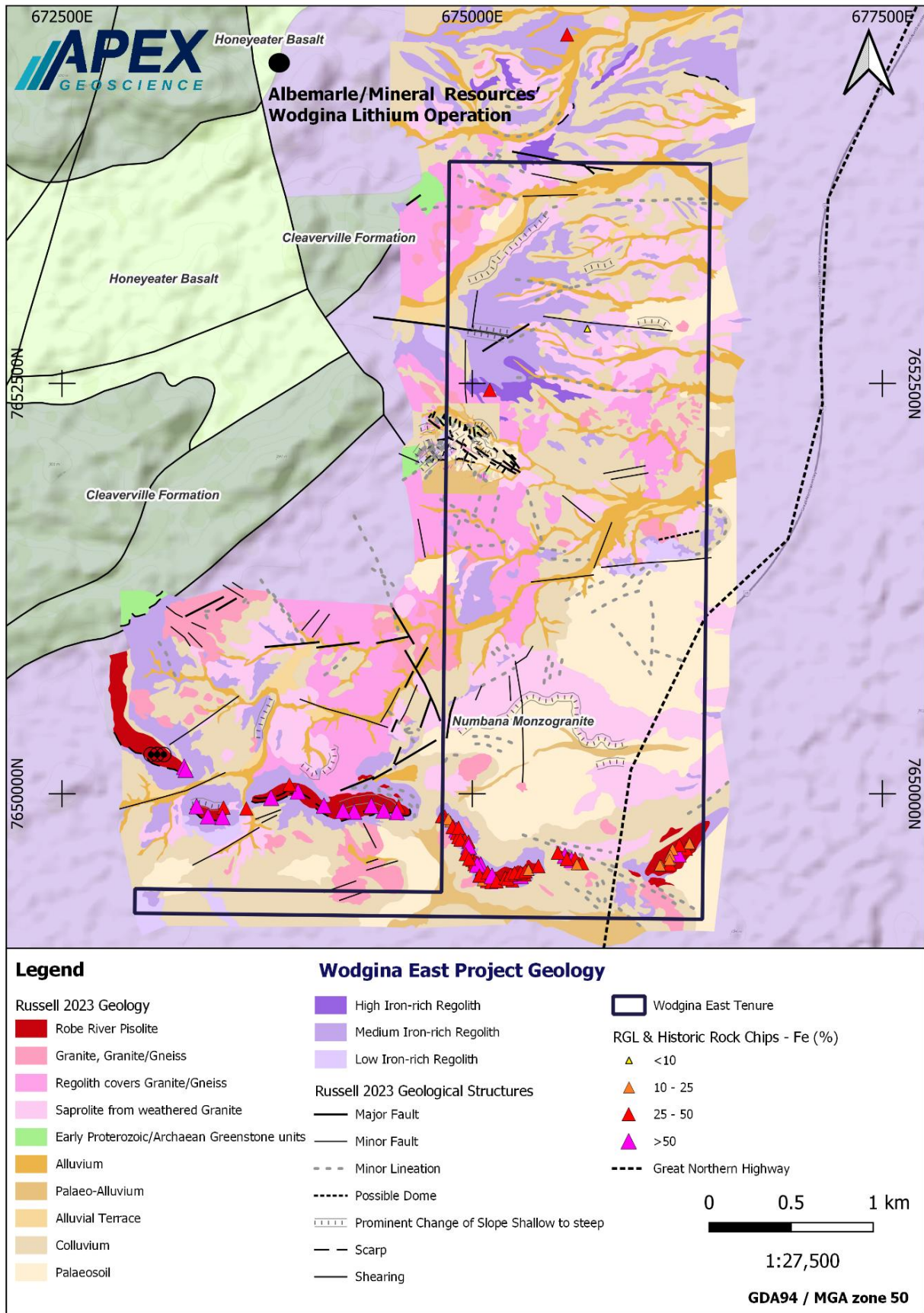
David Lenigas, Chairman of RGL, said: “RGL is ensuring it is keeping up to date with its expenditure commitments for this tenement as we consider that it will become more valuable as the Wodgina Mine comes closer to the tenement boundary. I encourage shareholders to review figure 2 of this announcement to ascertain for themselves the potential longer-term value towards our tenement portfolio. We are now reviewing next steps to advance a more detailed exploration program on the granted tenement going forward.”

Riversgold Limited (ASX: RGL, Riversgold or the Company) is pleased to announce that a site visit has been completed at Wodgina East (granted tenement E45/6363), that sits immediately adjacent to the Wodgina Lithium mine in the Pilbara region of Western Australia and is located only 120km south of Port Hedland.

The Company announced to the ASX on 30 May 2024<sup>1</sup> that it had completed its Phase 1 reconnaissance exploration program at the Wodgina East Project (the “Project”) and identified several potential channel iron deposits (“CID”) on the Project. Detailed geological and satellite imagery mapping (Figure 1) of the area has delineated two erosional resistant mesas extending over 1.5 km in length. One of the mesas is capped by a hard, goethite-hematite, pisolitic (to oolitic) clastic sedimentary unit, interpreted to be physically transported iron derived from the erosion of laterite hardcap. The clastic iron fragments are cemented by iron oxides. Review of historical open-file exploration data showed that Mesa 2 returned 8 rock chip samples ranging from 51.94% to 56.67% Fe. These samples were collected by Hemisphere Resources in 2011 and 2012.

On this site visit, the Company’s geological team, lead by Technical Director, Ed Mead, reviewed last year’s work to consider next steps for exploration work. The Company also observed how close the Wodgina Lithium Mine now is to the north west boundary of Wodgina East (granted tenement E45/6363), refer Figure 2.

<sup>1</sup> RGL ASX announcement dated 30 May 2024: “Channel Iron Delineated at Wodgina East, Pilbara”



**Figure 1: Mapped Geology of Wodgina East Project (E45/6363), as released to the ASX on 30 May 2025<sup>2</sup>**

<sup>2</sup> RGL ASX announcement dated 30 May 2024: "Channel Iron Delineated at Wodgina East, Pilbara"



Figure 1: Oblique orthophoto on Wodgina East tenement (E45/6363), looking North West towards the Wodgina Lithium Mine, operated by Mineral Resources Limited. The operations are getting closer.

-ENDS-

This announcement has been authorised for release by the Board of Riversgold Ltd.

**For further information, please contact:**

David Lenigas  
Executive Chairman  
P: +44 (0) 7881825378  
E: [dlenigas@riversgold.com.au](mailto:dlenigas@riversgold.com.au)

Ed Mead  
Director  
P: 0407 445351  
E: [emead@riversgold.com.au](mailto:emead@riversgold.com.au)

**Competent Person's Statement**

The information in this report that relates to exploration results is based on information compiled by Mr Edward Mead, who is a Fellow of the Australasian Institute of Mining and Metallurgy. Mr Mead is a director of Riversgold Ltd and a consultant to the Company through Doreda Pty Ltd. Mr Mead has sufficient experience which is relevant to the style of mineralisation and type of deposits under consideration and to the activity that he is undertaking to qualify as a Competent Person as defined in the 2012 edition of the 'Australian Code for Reporting Exploration Results, Mineral Resources and Ore Reserves' (the JORC Code). Mr Mead consents to the inclusion of this information in the form and context in which it appears in this report. Exploration results reported in this announcement have previously been reported in accordance with Listing Rule 5.7 on the dates referenced throughout.